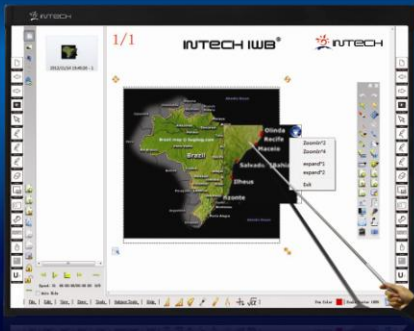




## OPTICAL INTERACTIVE WHITEBOARD

INTECH IWB® DV series



### Why INTECH IWB®?

- Finger touch.
- Super sensitive lens of 1280\*768 pixels developed by INTECH.
- Multi-touch gestures supported.
- Precise positioning and high accuracy makes line drawing smoothly.
- Fast response without writing delay.
- Wireless module is an option for data transmission.
- Easy Draw software with powerful function, easy to learn and use, upgrade free.

**Idea for touch**

The most easy-to-use interactive whiteboard manufacturer in the world



Web : [www.cnintech.com](http://www.cnintech.com) [www.intechboard.com](http://www.intechboard.com) Email : [info@cnintech.com](mailto:info@cnintech.com) Tel : +86-592-5902910  
Fax : +86-592-5902916 Address : 1/F, NO. 45, Wanghai Road, Software Park Phase I, Xiamen, China

INTECH IWB®

### Solutions

It can be widely used in Classroom Teaching, Business Presentation, Enterprise Training, Government Meeting and Military Command.



### Specifications

Sensor Type	Optical imaging touch technology
Calibration	4 points
Resolution	32768*32768
Sampling Rate	180PT/S
Positioning Accuracy	5mm
Scanning Speed	First point:25ms, continuous points:8ms
Transmission Speed	12m/s
Working Temperature	- 20 ℃ to + 60 ℃
Working Humidity	10% to 90%
Power Supply	USB Power less than 5V
Operation System	Windows XP/Vista/Windows7/Linux/Mac

### Dimensions

Model	Size	Aspect Ratio	Overall Dimension(mm)	Effective Writing Area(mm)
DV-78	78"	4:3	1742*1281	1634*1173

[www.cnintech.com](http://www.cnintech.com) [www.intechboard.com](http://www.intechboard.com)