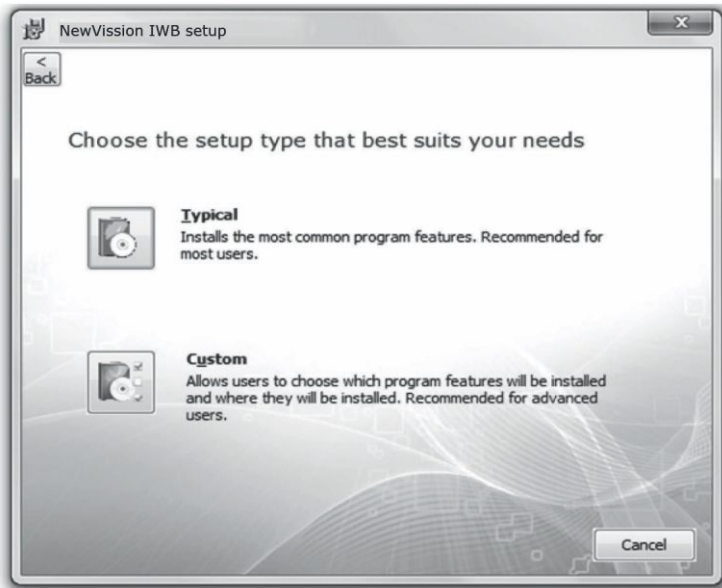


# **NewVission**

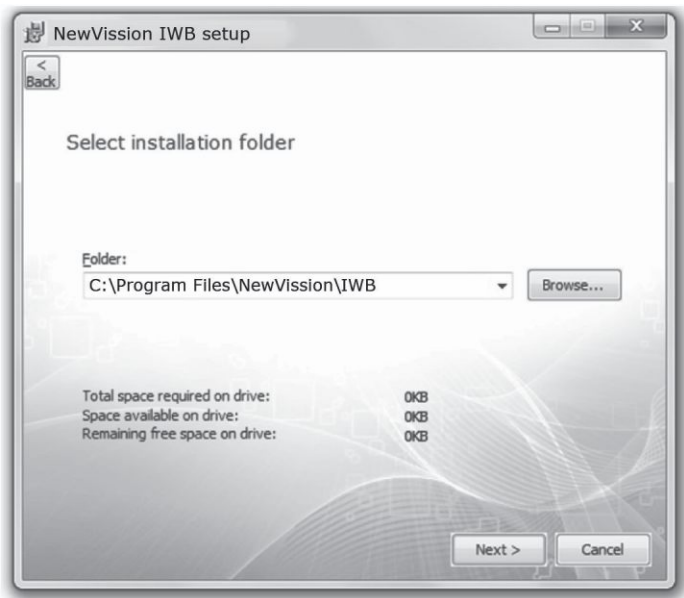
**IWB Software  
Installation Manual  
E-100/200**

## Installation

- Step 1:** Browse the NewVission IWB CD, either right click and Autorun or browse the CD and run E-100/200\_Master\_Installer\_XXXX file.
- Step 2:** Once the installation begins you will see the following screen, click “Next” to proceed.
- Step 3:** Click “Typical” installation



**Step 4:** Please enter the location on the system where the E-100/200 IWB should be installed, by default it is installed in the Program Files/ NewVision Interactive folder.



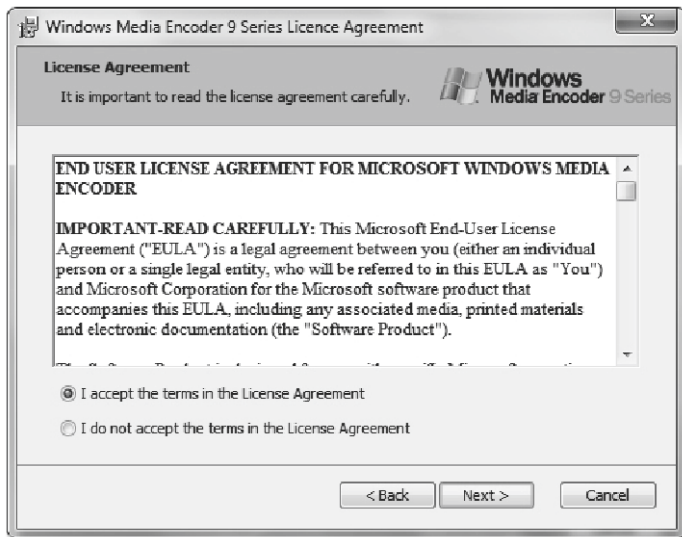
**Step 5:** Click "Install" to start the installation.



**Step 6:** After NewVission IWB installation is completed, you'll immediately see the screen given below, click "Next" to begin installing NewVission IWB prerequisites.

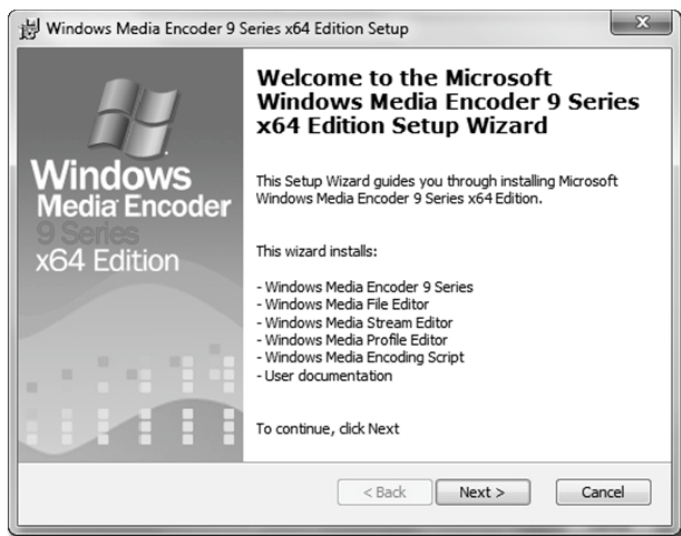


**Step 7:** Check "I accept ..." the terms in license agreement and click "Next".

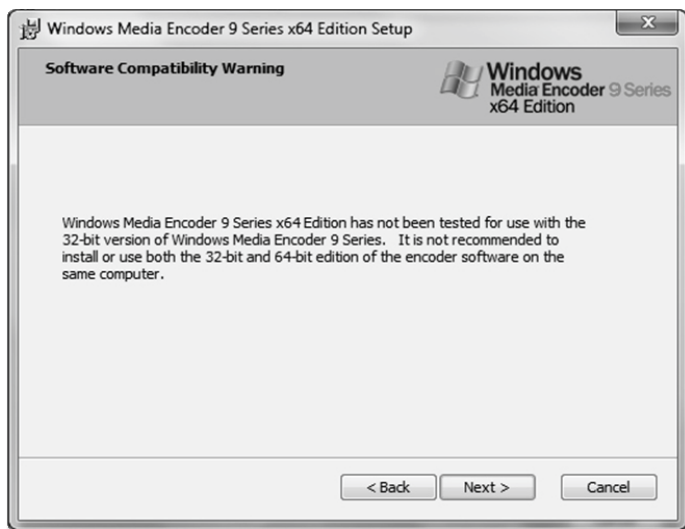




**Step 8:** After finishing installation of WM Encoder for 32bit Windows OS, it will automatically start installing WM Encoder for 64bit Windows OS (It will happen only if Windows 7 64bit is installed in pc or laptop), Click "Next" to begin installation

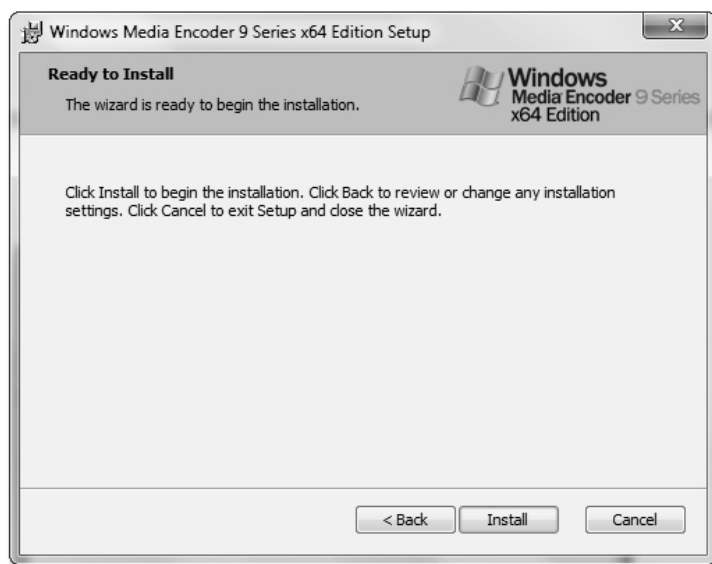
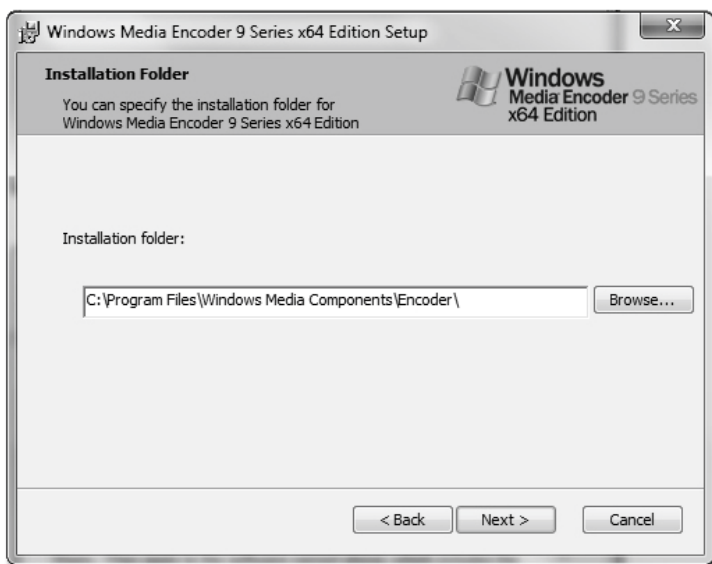


**Step9:** On seeing the screen below, click “Next” to proceed.



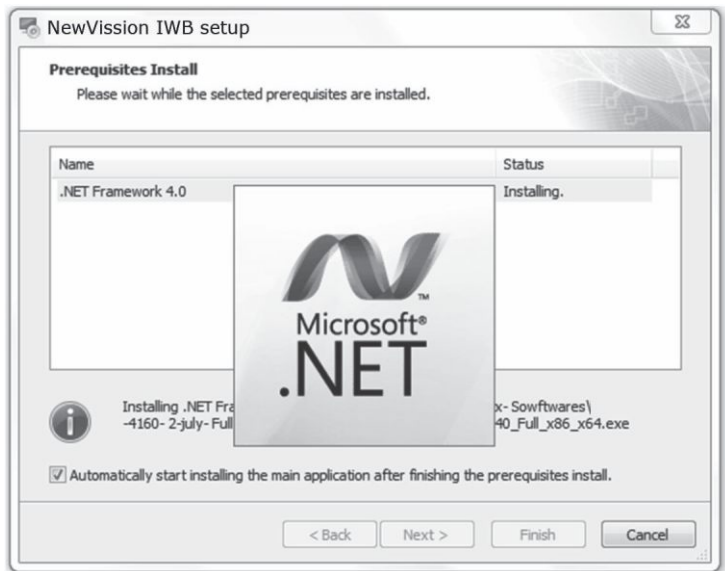
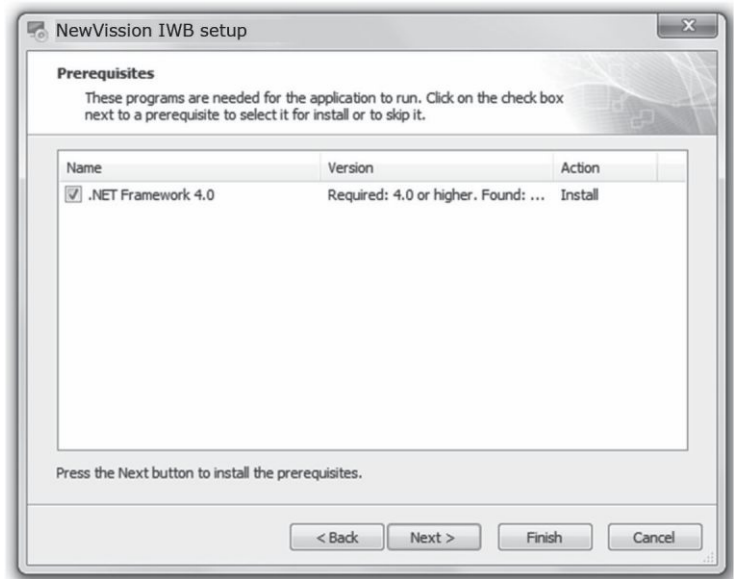
**Step10:** Follow the same procedure as earlier.



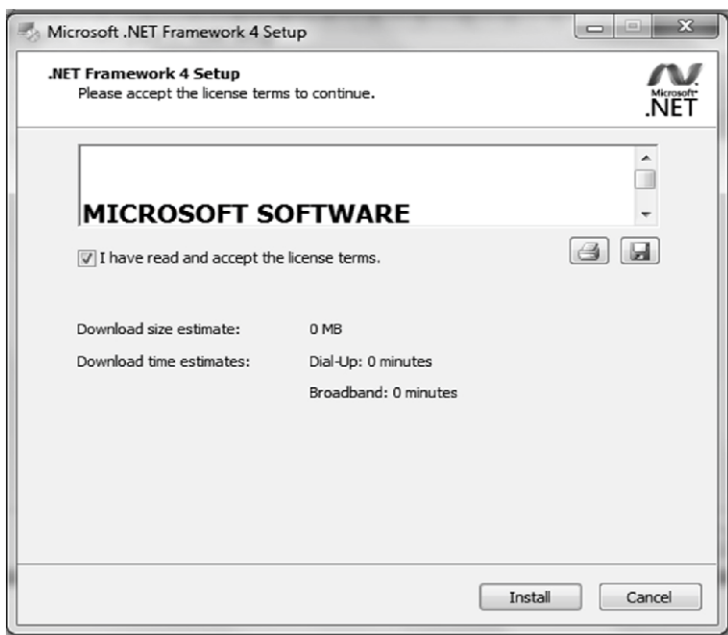


After WM Encoder gets installed, Flash player will be installed automatically.

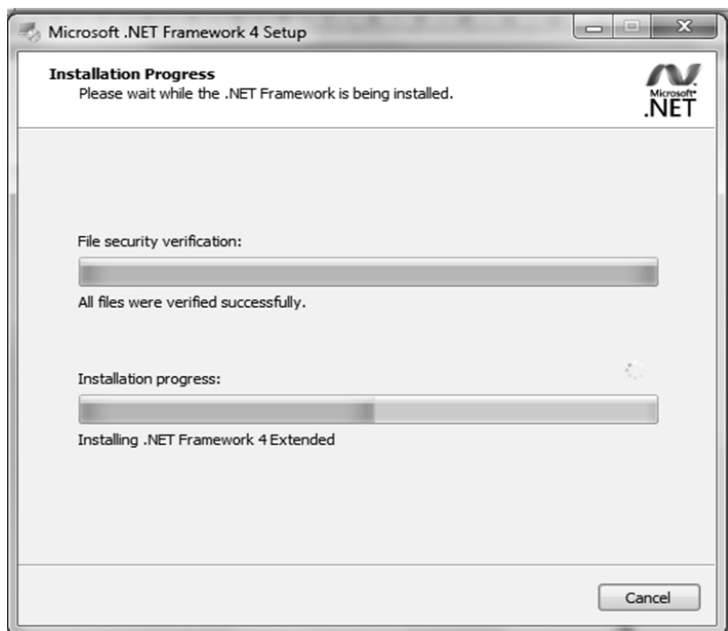
**Step 12:** Check on the “.NET” Check box and click “Next”.



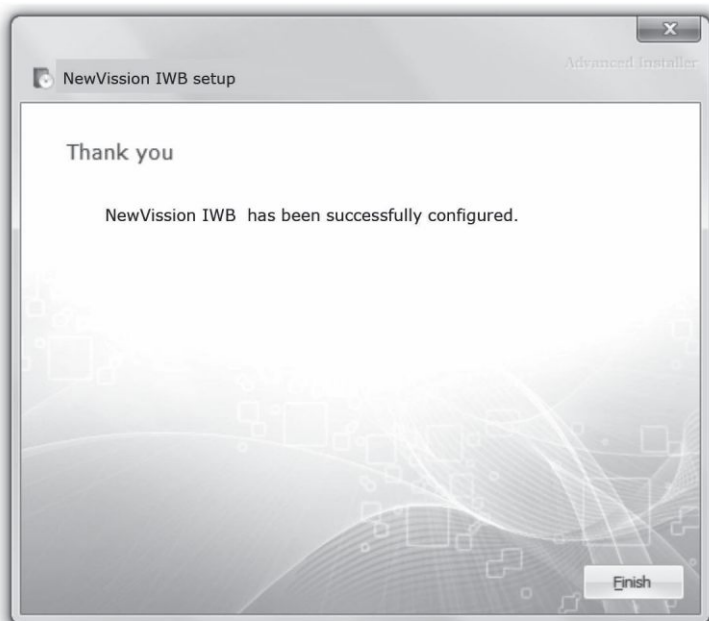




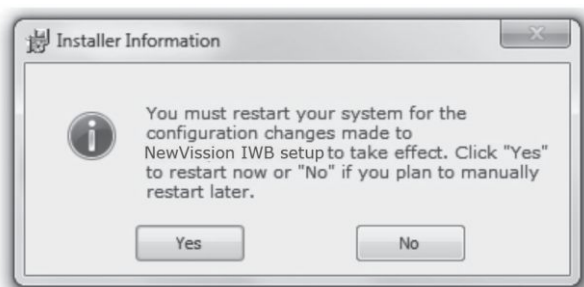
Once the following screen appears it may take some time, approx. 3- 5 min. depending on the processor speed.



Click "Finish" to complete Installation



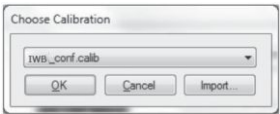
And click "Yes" to reboot the PC.



# E-100/200 Operation



When no calibration is loaded, the E-100/200 window appears as shown below:



or else shows all the stored calibrations:



## 1 Calibration Button



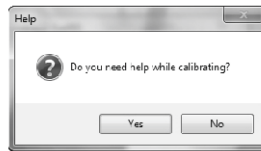
No Calibration Loaded (Red & Blue +)



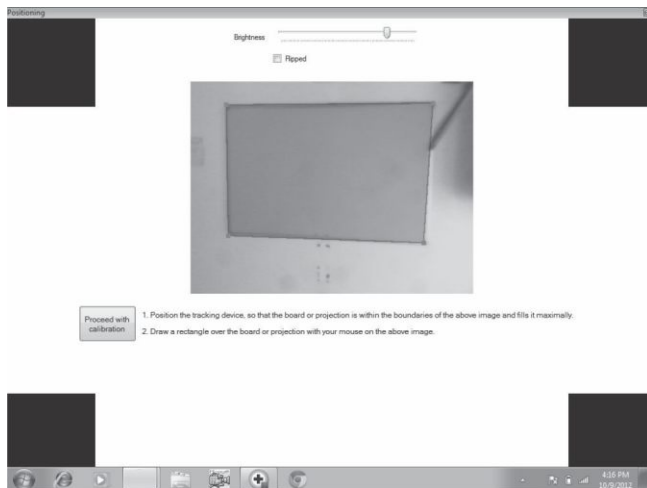
E-100 Calibrated (Blue +)

How to calibrate E-100/200?

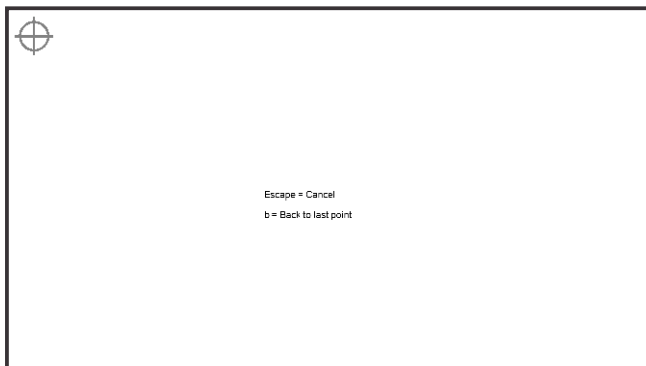
1. Click on the Calibration Button .
2. Click on the “Yes” button or press Enter, it will load the calibration helping page as shown.



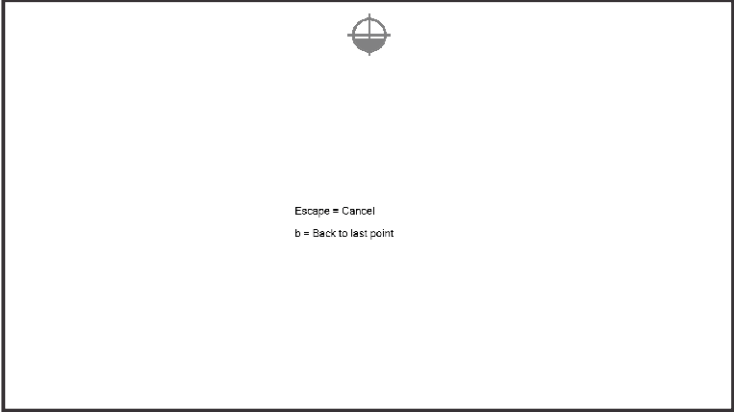
3. Try to cover the projection area closely by dragging your mouse on the display. You can also adjust the corners of the area of interest by clicking on them and dragging . After this, E-100/200 will only track inside this quadrilateral & rest all areas will be ignored. This is especially useful if there is some source of ambient light disturbance around the canvas.



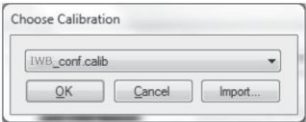
4. Now place the E-pen on the center of the calibration circle till it gets filled with red color & turns green.



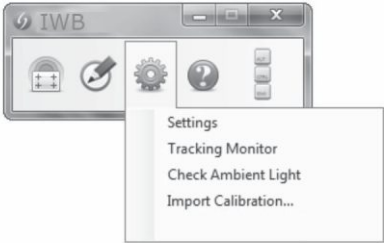
5. Repeat it for all the 9 calibration circle, in E-100/200 calibration circle, in E-100/200



6. Once done, please enter the name for the calibration and click “OK”.



7. E-100/200 is now calibrated.



**3. Settings**

**Settings**

Loads the setting menu

**Tracking Monitor**

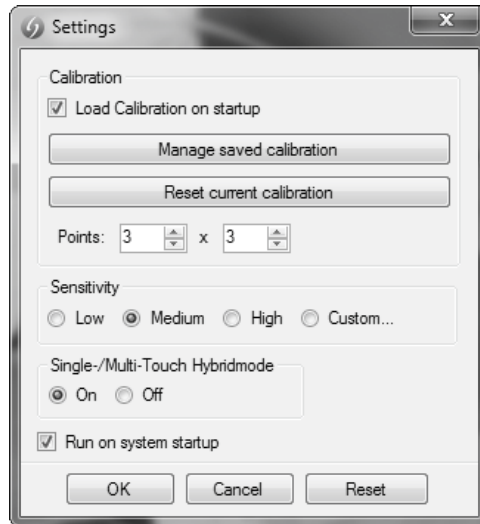
Shows the area which the E-100/200 device can see

**Check Ambient Light**

Checks for any ambient light in and around projection area

**Import Calibration**

Import calibration from another location



## Sensitivity

Increases/Decreases sensitivity of the E-100/200 device

## Calibration

Enables user to load another calibration on the fly

## Run On System Startup

Enables E-100/200 to automatically load on PC boot up

**Tracking Monitor:** E-100/200 Stylus is shown as white blob when used, as shown in the figure.

